

M314

WHEELED EXCAVATOR



Engine Power (ISO 14396)	110 kW (148 hp)
Operating Weight Maximum	18 000 kg (39,683 lb)

Cat® C4.4 engine meets U.S. EPA Tier 4 Final, EU Stage V, and Korea Tier 4 Final emission standards.



THE NEW CAT® M314

BOOSTING EFFICIENCY

The **Cat® M314** enhances your productivity with more comfort in the cab and easy-to-use controls. Lower fuel and maintenance costs put money back in your pocket.



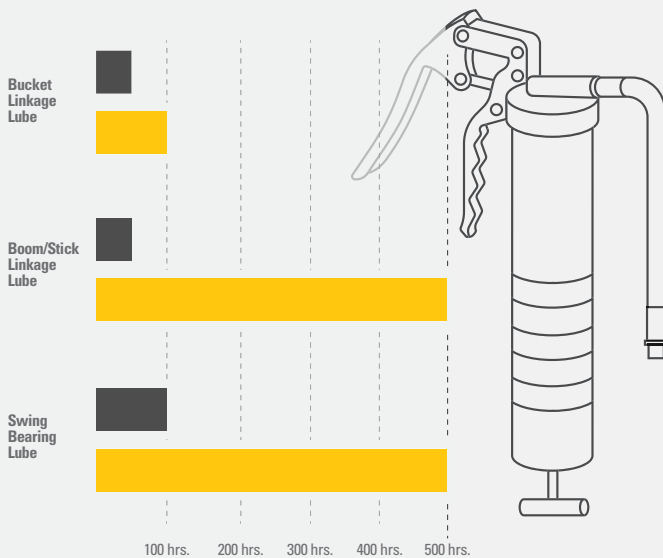
NEXT GENERATION WHEELED EXCAVATORS

The new wheeled excavators match your performance needs to bring you

- + LOWER OPERATING AND MAINTENANCE COSTS
- + INCREASED OPERATOR EFFICIENCY AND VISIBILITY
- + MORE IN-CAB COMFORT



DO MORE WORK WITH EXTENDED INTERVALS



* M314F M314

MAXIMIZE PERFORMANCE

Work faster with up to 15% more swing torque with lower fuel and DEF consumption. Tiltrotator integration gives you more versatility to complete more tasks with one machine.

ENHANCED CAB COMFORT

Operate comfortably with the ergonomic control layout and cab options. Get better visibility with rear and side view cameras and 360° machine view.

UP TO 10% MAINTENANCE PARTS SAVINGS¹

Fewer maintenance costs, combined with 100 percent daily ground level maintenance and shareable work tools, increase uptime and keep costs down.

¹ Compared to M314F.

CAT LINK TECHNOLOGY

TAKES THE GUESSWORK OUT OF MANAGING YOUR EQUIPMENT

CAT LINK telematics technology helps take the complexity out of managing your jobsites – by gathering data generated by your equipment, materials, and people and serving it up to you in customizable formats.



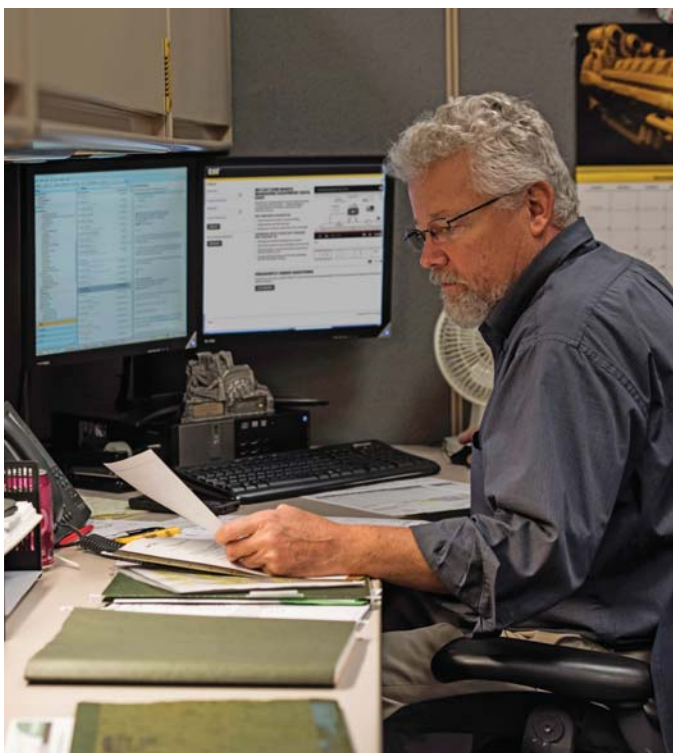
PRODUCT LINK™

Product Link™ collects data automatically and accurately from your assets – any type and any brand. Information such as location, hours, fuel usage, productivity, idle time, maintenance alerts, diagnostic codes, and machine health can be viewed online through web and mobile applications.



VISIONLINK®

Access information anytime, anywhere with VisionLink® – and use it to make informed decisions that boost productivity, lower costs, simplify maintenance, and improve safety and security on your jobsite. With different subscription level options, your Cat dealer can help you configure exactly what you need to connect your fleet and manage your business without paying for extras you don't want. Subscriptions are available with cellular or satellite reporting (or both).



Remote Services is a suite of technologies that improve your jobsite efficiency.

Remote Troubleshoot allows your Cat dealer to perform diagnostic testing on your connected machine remotely, pinpointing potential issues while the machine is in operation. Remote Troubleshoot ensures the technician arrives with the correct parts and tools the first time, eliminating additional trips to save you time and money.

Remote Flash updates on-board software without a technician being present, potentially reducing update time by as much as 50%. You can initiate the update when convenient, increasing your overall operating efficiency.

The **Cat App** helps you manage your assets – at any time – right from your smartphone. You can see your fleet location, hours, and other information you need to see. You will get critical alerts for required maintenance, and you can even request service from your local Cat dealer.

CAB TAKES THE HARD OUT OF WORK

Get in and out of the cab more easily with the tilt-up left console. Deluxe and Premium cab options offer supreme comfort from a heated/cooled seat to automatic temperature control.



ERGONOMIC CONTROL LAYOUT

Controls are positioned to reduce fatigue and straining movements to help keep you operating at your full potential.

REDUCED CAB VIBRATIONS

Feel more comfortable in the cab while you work with reduced cab vibrations from advanced viscous mounts.

BLUETOOTH® CONNECTION

Bluetooth® integrated radio allows for seamless mobile phone connection to listen to music, podcasts and hands-free calling.

LONGER SERVICE INTERVALS

The in-cab monitor tracks filter life and machine intervals, so you always know when it's time for regular machine service.

GROUND LEVEL ACCESS

Complete your daily machine checks entirely from the ground, minimizing the need to access the upper platform.

NEW FILTERS

Two levels of filtration protect your engine from dirty diesel. The new hydraulic oil filter improves filtration performance and lasts up to 50 percent longer than previous filter designs.



SAVE UP TO

10% IN MAINTENANCE PARTS



KEYLESS PUSH START

Start the engine with the push-to start button, or the unique Operator ID function.



MACHINE SETTINGS

Access the operator manual at your fingertips, as well as the power mode selector to keep productivity while using less fuel.



JOYSTICK PREFERENCES

Program in your preferred power mode and joystick preferences with your Operator ID. Once you enter in your Operator ID, the excavator remembers your settings each time.



TOUCHSCREEN MONITOR

Use the standard 254 mm (10 in) touchscreen monitor to adjust your heating/cooling setting for more comfort, or to view your machine information.

LOOK OUT FOR YOUR PEOPLE AND YOUR EQUIPMENT

SAFETY FEATURES



STAY SAFE EVERY DAY

FACT:

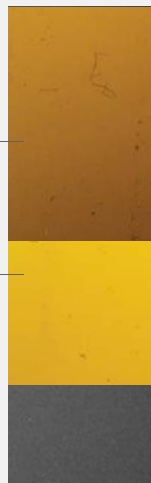
#1 cause of construction accidents: **FALLS***

49% OF FALLS RESULT IN SERIOUS INJURY

30% OF FALLS RESULT IN DEATH

100% GROUND-LEVEL MAINTENANCE HELPS PREVENT FALLS

FALLS



*<https://www.ncbi.nlm.nih.gov/pmc/articles/PMC4962179/>

Daily maintenance checks can be performed with 100% of the points accessible from ground level, making maintenance faster, easier, and safer. Standard LED lights give you a better view of your jobsite.

- + Enjoy better visibility into trenches, in each swing direction, and behind you. The smaller cab pillars, larger windows, and a flat engine hood design lower obstruction to your view. Rearview and sideview cameras are standard, and the 360 degree view system option offers a higher viewing vantage point of the machine.
- + The standard sound suppression ROPS cab meets ISO 12117-2:2008 requirements and helps to block the noise to stay focused on the job.
- + The service platform design provides easy, safe, and quick access to upper platform. The steps use anti-skid punch plate to prevent slipping.
- + The auto axle lock presses the pedal for you to reduce your overall number of actions. The machine automatically detects when the service brake and axle need to be locked or unlocked. It releases automatically when you press the travel pedal.

INCREASE PRODUCTIVITY AND VERSATILITY WITH CAT ATTACHMENTS

You can easily expand the performance of your machine by utilizing any of the variety of Cat Attachments. Each Cat Attachment is designed to fit the weight and horsepower of Cat Wheeled Excavators for improved performance, safety, and stability. Lower your costs by sharing the same attachments as the 313 Cat Excavator.

BUCKETS



GRAPPLES



HYDRAULIC HAMMERS



QUICK COUPLER



SHEARS



VIBRATORY PLATE COMPACTORS



MULCHERS



TILTROTATOR*



PIN GRABBER COUPLER



*Not all features are available in all regions. Consult your Cat dealer for specific configurations available in your region.

TECHNICAL SPECIFICATIONS

See cat.com for complete specifications.

ENGINE	
Engine Model	Cat C4.4
Engine Power (ISO 14396)	110 kW 148 hp
Maximum Net Power (ISO 14396 metric)	143 hp (PS)
Bore	105 mm 4 in
Stroke	127 mm 5 in
Displacement	4.4 L 268.5 in ³
<ul style="list-style-type: none"> • The Cat C4.4 meets Tier 4 Final, Stage V, and Korea Tier 4 Final emission standards. • No engine power derating required below 3,000 m (9,843 ft) altitude. • Engine power advertised is the power available at the flywheel when the engine is equipped with fan, air cleaner, exhaust gas aftertreatment, and alternator. • Rating at 2,000 rpm. 	
HYDRAULIC SYSTEM	
Main System – Maximum Flow – Implement	270 L/min 71 gal/min
Maximum Pressure – Equipment	35 000 kPa 5,076 psi
Maximum Pressure – Travel	35 000 kPa 5,076 psi
Maximum Pressure – Swing	35 500 kPa 5,149 psi
SWING MECHANISM	
Swing Speed	9.1 rpm
Maximum Swing Torque	39 kN·m 28,860 lb-ft
MACHINE WEIGHT	
Operating Weight Minimum	14 070 kg 31,019 lb
Operating Weight Maximum	18 000 kg 39,683 lb
<ul style="list-style-type: none"> • Typical configurations include 2200 mm (7'2") medium stick, 3100 kg (6,834 lb) counterweight, full fuel tank, operator, quick coupler (210 kg/463 lb), bucket (500 kg/1,102 lb) and dual pneumatic tires. 	
SERVICE REFILL CAPACITIES	
Fuel Tank	295 L 77.9 gal
Cooling System	24 L 6.3 gal
Engine Oil	11 L 2.9 gal
Diesel Exhaust Fluid (DEF)	20 L 5.3 gal
Final Drive	2.4 L 0.6 gal
Hydraulic System (including tank)	220 L 58.1 gal
Hydraulic Tank	90 L 23.8 gal

DIMENSIONS	
Boom	5 m (16'6")
Stick	2200 mm (7'3")
Bucket	GD 0.76 m ³ (0.99 yd ³)
Shipping Height (top of cab)	3315 mm 10'11"
Shipping Length	8210 mm 26'11"
Tail Swing Radius	2150 mm 7'1"
Counterweight Clearance	1260 mm 4'2"
Ground Clearance	335 mm 1'1"
Undercarriage Length	4920 mm 16'2"
Wheel Base	2500 mm 8'2"
WORKING RANGES AND FORCES	
Boom Type	VA Boom
Stick	2200 mm (7'3")
Bucket	GD 0.76 m ³ (0.99 yd ³)
Dump Height	7010 mm 23'0"
Digging Height	5290 mm 17'4"
Reach at Ground Level	8650 mm 28'5"
Vertical Wall Digging Depth	4250 mm 13'11"
<ul style="list-style-type: none"> • Range values are calculated with a tip radius of 1387 mm (4'6"). CW-type bucket (358-8665, GD, 1000 mm/3'3", 0.6 m³/0.73 yd³, with Advansys™ 70 tips) and CW-20S-D.4.N quick coupler. Breakout force values are calculated with a tip radius of 1224 mm (4'0") and heavy lift on. Pin-On Bucket (358-8619, GD, 1100 mm/3'7" 0.68 m³/0.89 yd³ with Advansys 70 tips) with no quick coupler. 	
AIR CONDITIONING SYSTEM	
<p>The air conditioning system on this machine contains the fluorinated greenhouse gas refrigerant R134a (Global Warming Potential = 1430). The system contains 0.85 kg of refrigerant which has a CO₂ equivalent of 1.216 metric tonnes.</p>	

STANDARD & OPTIONAL EQUIPMENT

Standard and optional equipment may vary. Consult your Cat dealer for details.

CAB	STANDARD	OPTIONAL
ROPS, sound suppression	•	
Keyless push-to-start engine control	•	
Openable two-piece front window	•	
One piece windshield		•
Deluxe cab		•
Premium cab		•
High-resolution 254 mm (10 in) LCD touchscreen monitor	•	
CAT TECHNOLOGIES	STANDARD	OPTIONAL
Product Link	•	
Remote Flash/Troubleshoot Capability	•	
ENGINE	STANDARD	OPTIONAL
Power Mode Selector	•	
One-touch low idle with auto engine speed control	•	
Auto engine idle shutdown	•	
52° C (125° F) high-ambient cooling capacity	•	
-18° C (0° F) cold start capability	•	
Double element air filter with integrated precleaner	•	
Biodiesel capability up to B20	•	
HYDRAULIC SYSTEM	STANDARD	OPTIONAL
Boom and stick regeneration circuits	•	
Auto hydraulic warm up	•	
Boom and stick drift reduction valve	•	
Slider joysticks (two types)		•
Ride control		•
Cat TRS support		•
Joystick steering		•
Combined flow/high-pressure auxiliary circuit		•
Quick coupler circuit		•

BOOM AND STICKS	STANDARD	OPTIONAL
5 m (16'6") reach VA boom, 2.2 m (7'3") reach stick	•	
5 m (16'6") reach VA boom, 2.5 m (8'2") reach stick		•
5 m (16'6") reach VA boom, 2.9 m (9'6") reach drop nose stick		•
UNDERCARRIAGE AND STRUCTURES	STANDARD	OPTIONAL
Tires, 10.00-20 16 PR, dual	•	
Tires, 315/70R22.5, no gap dual		•
Tires, 445/70R19.5, single		•
Tires, 10.00-20, dual, solid rubber		•
Automatic brake/axle lock	•	
3100 kg (6,834 lb) counterweight	•	
Fenders		•
ELECTRICAL SYSTEM	STANDARD	OPTIONAL
Two 900 CCA maintenance-free batteries	•	
Roading and indicator lights, front and rear	•	
Programmable time-delay LED working lights	•	
LED chassis light, left-hand/right-hand boom lights, cab lights	•	
Electrical refueling pump		•
SERVICE AND MAINTENANCE	STANDARD	OPTIONAL
Sampling ports for Scheduled Oil Sampling (S-O-S SM)	•	
Ground-level and platform-level engine oil dipsticks	•	
SAFETY AND SECURITY	STANDARD	OPTIONAL
Rear and right-side-view cameras	•	
360° visibility		•
Wide angle mirrors	•	
Ground-level engine shutoff switch	•	
Handrail and hand holds on service platform	•	
Signaling/warning horn	•	

Not all features are available in all regions. Please check with your local Cat dealer for specific offering availability in your area.

For additional information and additional regional offerings, refer to the Technical Specifications brochure available at www.cat.com or your Cat dealer.

For more complete information on Cat products, dealer services and industry solutions, visit us on the web at www.cat.com

© 2020 Caterpillar. All Rights Reserved.

VisionLink is a trademark of Trimble Navigation Limited, registered in the United States and in other countries.

Materials and specifications are subject to change without notice. Featured machines in photos may include additional equipment. See your Cat dealer for available options.

CAT, CATERPILLAR, LET'S DO THE WORK, their respective logos, "Caterpillar Corporate Yellow," the "Power Edge" and Cat "Modern Hex" trade dress as well as corporate and product identity used herein, are trademarks of Caterpillar and may not be used without permission.
www.cat.com www.caterpillar.com

AEXQ2877
Build Number: 07A
(ANZ, Eur, Korea, N Am)

